



# *P'fact*

Labware & Consumables  
Price List  
2017-18

At **Fine Care Corporation**, innovation & improvement is the continuous process.

We do design, developed and manufacture one of the largest range of scientific lab products in the world and still growing. Multiple times in past, we have changed the perspective of the world about products manufactured by Indian company by providing unique products and have increased the brand value of **"Made in India"**.

We are glad to provide products that match the world standards. We are proud to supply the same products that are appreciated in more than 120 countries across the globe. We are happy to be the disruptor to change the status quo in labware market by offering highest quality products.

We are delighted to be part of **"MAKE IN INDIA"**

## ISO 9001 : 2008

**CERTIFICATE** 

Management system as per  
DIN EN ISO 9001 : 2008

In accordance with TUV NORD CERT procedures it is hereby certified that

**FINE CARE CORPORATION**  
194/6/2, Dantoli Industrial Owners Association,  
Gota-Vadisar Road, Village - Dantoli, Tal. Kalol,  
Dist. Gandhinagar - 382721, Gujarat,  
India

applies a management system in line with the above standard for the following scope:

**Manufacture & Supply of Micro Volume Liquid Dispensing Equipments & Parts**

Certificate Registration No. QM 02 00812  
Issue Report No. G 461V0212

  
S.K. Kulkarni  
Certification Body  
at TUV INDIA PVT. LTD.

Valid until 14/09/2018  
(and 17.11.2018 in case of transfer to ISO 9001:2015)  
Valid from 15.11.2015  
Initial Certification 18.11.2015

Issue 21.11.2015  
Place: Mumbai

This certification was conducted in accordance with the TUV INDIA auditing and certification procedure and is subject to regular surveillance audits.

TUV India Pvt. Ltd., 901, Nehru Plaza - 1, L.B.S. Marg, Chokkisar (W), Mumbai - 400 086, India. [www.tuvindia.com](http://www.tuvindia.com)

## NABL

  
**NABL**  
National Accreditation Board for  
Testing and Calibration Laboratories  
An Autonomous Body under Department of Science & Technology, Govt. of India

**CERTIFICATE OF ACCREDITATION**

**CALIBRATION LABORATORY, FINE CARE CORPORATION**  
has been assessed and accredited in accordance with the standard  
**ISO/IEC 17025:2005**  
"General Requirements for the Competence of Testing & Calibration Laboratories"  
for its facilities at  
194/6/2, Dantoli Industrial Owners Association, Gota-Vadisar Road, Village - Dantoli, Tal. Kalol, Dist. Gandhinagar

in the discipline of  
**MECHANICAL CALIBRATION**

(To see the scope of accreditation of this laboratory, please also visit NABL website [www.nabl-india.org](http://www.nabl-india.org))

Certificate Number **C-0559**

Issue Date **26/09/2015** Valid Until **25/09/2017**

This certificate remains valid for the Scope of Accreditation as specified in the attestation subject to continued satisfactory compliance to the above standard & the additional requirements of NABL.

Signed for and on behalf of NABL,

  
Avijit Das  
Program Manager

  
Anil Bhatta  
Director

  
Dr. T. Ramasami  
Chairman

## CE

**CE Technical Documentation Review Report** 

Applicant: Fine Care Corporation  
3rd Floor, Sun House, 8th old high court, Ashram  
road, Ahmedabad-380005

Examination intent: Examination of the completeness of the Technical Documentation according to the requirements of the In Vitro Diagnostic Medical Devices Directive 98/79/EC Annex III

Product(s): Micropipettes

Type(s)/Model(s): Fixed Volumes, Variable Volumes

Classification: Other IVD products (according to manufacturer declaration)

Examination period: 2005 Jan 20, 2006 Jan 29-30

Review result: During the examination of the provided Technical Documentation (dated 2002-04) no Non-compliance according to the requirements of the In Vitro Diagnostic Medical Devices Directive 98/79/EC Annex III was detected.

TUV Rheinland (Shanghai) Co., Ltd.

  
Xiao REN  
Manager (Asia Region)  
Medical Services



Number: 0004120

TUV Rheinland (Shanghai) Co., Ltd.  
Zhangyuan Road  
201305 Shanghai  
China

2600 Road, Suite 1  
New Century Park  
215 York Way, New York  
New York, NY 10038  
USA

Phone: 8621 6888 8888 E-mail: [info@tuv.com](mailto:info@tuv.com)  
Fax: 8621 6888 4268 Web: [www.tuv.com](http://www.tuv.com)

# INDEX

◆ Mechanical Pipettes	
◆ Prime Pipette	2
◆ Semi Autoclavable Micro Pipette	4
◆ Fully Autoclavable Micro Pipette	5
◆ Multichannel Pipette	6
◆ Jr. Pipette	7
◆ Pipette Stand	7
◆ Electronic Pipette	8
◆ Pipette Controller	9
◆ Pipette Tips	10
◆ Centrifuge Tubes	13
◆ PCR Consumables	14
◆ Centrifuges	
◆ Personal Micro Centrifuge	15
◆ High Speed Micro Centrifuge	16
◆ Doctor Centrifuge	17
◆ Clinical Centrifuge	18
◆ Hematocrit Centrifuge	19
◆ Laboratory Centrifuge	20
◆ Mixers	
◆ Mini Vortex Mixer	21
◆ Benchtop Vortex Mixer	21
◆ Multitube Vortexer	22
◆ Rollers & Rotators	
◆ Roller & Disc Rotator	23
◆ Tube Roller	24
◆ Bottle Roller	25
◆ Disc Rotator	26
◆ Magnetic Stirrer	
◆ Motorless Ultra Slim Stirrer	27
◆ Hot Plate Stirrer	28
◆ Multi Station Hot Plate Stirrer	30
◆ High Capacity Stirrer	31
◆ Shakers	
◆ Microplate Shaker	32
◆ 4 Plate Shaker	32
◆ 3D Shaker	33
◆ Platform Shaker	34

## Prime PIPETTES

### Where Form Meets Function

- Ergonomic design
- Light & smooth plunger action
- Soft feel handle grip
- Suitable for both - left and right hand users



- One of the lowest operating force requirement compared to most of the pipettes



- Large and clear 4 digit display giving smaller increments for wider volume selection options
- Resistance free counter
- Volume display is always visible while pipetting



- Special Teflon sealing mechanism in lieu of conventional o-ring resulting in long lasting precise and smooth operation



- Soft touch tip ejection
- Locking mechanism for preventing accidental volume changes



- In house cleaning, repair and calibration possible without any special tools
- Easily accessible recalibration mechanism



- Shelf mounting stand for convenient storage and handling



**3** WARRANTY  
YEARS



- Surprisingly light weight yet robust



- Color coding for easy identification



- Special engineering plastics resulting in better protection against chemical and physical corrosion



- Fully autoclavable



- Enhanced UV resistance for higher durability



- Calibrated in ISO 17025 (NABL) accredited laboratory. Supplied with individual QC and calibration report according to ISO 8655

### Fix Volume Micropipette

Cat.No.	Volume [μl]
SFA-205	2.5
SFA-5	5
SFA-10	10
SFA-20	20
SFA-25	25
SFA-50	50
SFA-100	100
SFA-200	200
SFA-250	250
SFA-500	500
SFA-1000	1000
SFA-2000	2000
SFA-5000	5000
SFA-10000	10000

### Multichannel Pipette

- Manifold can rotate 360° to allow any convenient pipetting angle
- Internal pipetting mechanism is made of clinical resistant high grade metal ensures volume precision in all channels
- Specially designed tip cone with O-ring resulting in:
  - Leak free operation
  - Smooth as well as light loading and ejection
  - Choice of variety of tips
- Each channel is calibrated individually
- Includes all innovative features of Prime single channel pipette



### 8 & 12 Channel Micropipette

Cat.No.	Volume Range	Increments [μl]
SMA8 - 010	0.5-10 μl	0.02
SMA12- 010	0.5-10 μl	0.02
SMA8 - 020	2-20 μl	0.02
SMA12- 020	2-20 μl	0.02
SMA8 - 050	5-50 μl	0.1
SMA12- 060	5-50 μl	0.1
SMA8 - 100	10-100 μl	0.1
SMA12- 100	10-100 μl	0.1
SMA8 - 200	20-200 μl	0.2
SMA12- 200	20-200 μl	0.2
SMA8 - 300	30-300 μl	0.2
SMA12- 300	30-300 μl	0.2

### Variable Volume Micropipette

Cat.No.	Volume Range [μl]	Increments [μl]
SVA-125	0.1-2.5	0.002
SVA-100	0.5-10	0.02
SVA-200	5-50	0.1
SVA-500	10-100	0.1
SVA-600	100-1000	1
SVA-700	2-20	0.02
SVA-800	20-200	0.2
SVA-905	500-5000	10
SVA-1000	1000-10000	20

### Pipette Stand

Cat.No.	Description
SAS-01	Carousel stand for 6 pipettes
SAS-02	Shelf mount pipette holder

# P'fact

# P'fact

## Micro Volume Pipette

- Ergonomic Design ensuring light weight & soft plunger movement
- Click - stop digital system for volume setting
- Colour coded for easy identification
- Calibration conforms to EN- ISO 8655 standards ensuring high accuracy & precision



Variable Volume Micropipette

Cat.No.	Volume Range [ $\mu$ l]	Increments [ $\mu$ l]
VA-125	0.1-2.5	0.01
VA-100	0.5-10	0.1
VA-200	5-50	0.5
VA-300	50-200	1
VA-400	200-1000	5
VA-500	10-100	0.5
VA-600	100-1000	5
VA-700	2-20	0.1
VA-800	20-200	1
VA-900	1000-5000	50
VA-905	500-5000	50
VA-1000	1000-10000	100
VA-1005	500-10000	100

Fix Volume Micropipette

Cat.No.	Volume [ $\mu$ l]
FA-205	2.5
FA-5	5
FA-10	10
FA-20	20
FA-25	25
FA-50	50
FA-100	100
FA-200	200
FA-250	250
FA-500	500
FA-1000	1000
FA-2000	2000
FA-5000	5000
FA-10000	10000



# P'fact

## Fully Autoclavable Pipette

- Ideal for genetics microbiology and biotech application
- Ergonomic Design
- Colour coded for easy identification.
- Calibration conforms to EN- ISO 8655 standards ensuring high accuracy & precision.



Variable Volume Micropipette


Cat.No.	Volume Range [µl]	Increments [µl]
AV-125	0.1-2.5	0.01
AV-100	0.5-10	0.1
AV-200	5-50	0.5
AV-300	50-200	1
AV-400	200-1000	5
AV-500	10-100	0.5
AV-600	100-1000	5
AV-700	2-20	0.1
AV-800	20-200	1
AV-900	1000-5000	50
AV-905	500-5000	50
AV-1000	1000-10000	100
AV-1005	500-10000	100

Fix Volume Micropipette


Cat.No.	Volume [µl]
AF-205	2.5
AF-5	5
AF-10	10
AF-20	20
AF-25	25
AF-50	50
AF-100	100
AF-200	200
AF-250	250
AF-500	500
AF-1000	1000
AF-2000	2000
AF-5000	5000
AF-10000	10000



### Multichannel Pipette

Volume	Product	Cat No. 8 Channel	Cat No. 12 Channel	Increments [ $\mu$ l]
0.5-10 $\mu$ l	<i>P'fact</i>	MA8-010	MA12-010	0.1
0.5-10 $\mu$ l	<i>P'fact</i> 	AM8-010	AM12-010	0.1
2-20 $\mu$ l	<i>P'fact</i>	MA8-050	MA12-050	0.1
2-20 $\mu$ l	<i>P'fact</i> 	AM8-050	AM12-050	0.1
5-50 $\mu$ l	<i>P'fact</i>	MA8-050	MA12-050	0.5
5-50 $\mu$ l	<i>P'fact</i> 	AM8-050	AM12-050	0.5
10-100 $\mu$ l	<i>P'fact</i>	MA8-100	MA12-100	0.5
10-100 $\mu$ l	<i>P'fact</i> 	AM8-100	AM12-100	0.5
20-200 $\mu$ l	<i>P'fact</i>	MA8-200	MA12-200	1.0
20-200 $\mu$ l	<i>P'fact</i> 	AM8-200	AM12-200	1.0
30-300 $\mu$ l	<i>P'fact</i>	MA8-300	MA12-300	1.0
30-300 $\mu$ l	<i>P'fact</i> 	AM8-300	AM12-300	1.0

- Soft force / leak free tip loading and ejection.
- Easily removable & fully autoclavable manifold.
- Robust metallic structure of manifold provides precise working for longer time.
- Easy Right or Left hand operation because of 360° rotatable manifold.
- One hand tip ejection.
- Attractive color coding.
- Compatible with most types of tips.

\* *P'fact*  are Fully Autoclavable Pipettes.







# P'fact

# P'fact

## Electronic Pipette

### Simpler - Better - Beautiful

- Light weight and ergonomic design with comfortable operations helps to avoid Repetitive Strain Injuries (RSI)
- High-resolution color screen with real time display of pipetting operation
- User friendly interface. Easy selection of all modes.
- One of the most reliable 3-point calibration method ensuring accuracy and consistency in pipetting results in it's complete working range
- Saves power by switching off pipette if it is not in use for longer time
- Favorite program can be stored for frequently used sequence steps for smoother handling of complex process
- Easy maintenance of lower parts
- Faster battery charging, longer working

#### Single Channel Electronic Pipette

Cat.No.	Volume Range
PFE-10	0.5-10 µl
PFE-100	5-100 µl
PFE-200	10-200 µl
PFE-1000	50-1000 µl
PFE-5000	250-5000 µl

#### Multi-Channel Electronic Pipette

8 Channel Cat.No.	12 Channel Cat.No.	Volume Range
PFE-8-10	PFE-12-10	0.5-10 µl
PFE-8-20	PFE-12-20	2-20 µl
PFE-8-100	PFE-12-100	5-100 µl
PFE-8-200	PFE-12-200	10-200 µl
PFE-8-300	PFE-12-300	15-300 µl



**P'fact**

# Pipette Controller

- Can fill 25 ml pipet under 4 seconds
- Safety valve and hydrophobic filters provide double protection against fluid penetration
- Two different speed modes - High & Low along with Gravity drain
- The pump speed can also be fine-tuned by varying finger pressure on operating knobs for better control of speed
- Cadmium free environment friendly NiMH batteries
- Batteries can be changed very easily by the user
- The intelligent charger prevents over charging / heating of batteries
- Low battery indicator
- The specially designed Desktop stand as well as wall mounted stand enables the PipetController to be charged while resting on it.
- The PipetController can hold the serological pipette while resting on Desktop Stand.

## Technical Data

Power	2 x 1.2 V / 1000 mAh NiMH batteries
Battery Service Life	Eight hours continuous use
Battery Charging Time	2 - 3 hours to charge fully
Volumetric Range	Plastic or Glass pipette from 0.1 ml up to 200 ml
Safety System	Replaceable hydrophobic 0.45 µm PTFE filter Safety check valve
Standard Accessory	Battery charger Desktop Stand Hydrophobic PTFE membrane filter 0.45 µm 2Pcs Hydrophobic PTFE membrane filter 0.20 µm 1Pc Wall mounting stand

Cat.No.	Capacity
PH01-R	Pipette Controller - Red
PH01-B	Pipette Controller - Blue
PH01-O	Pipette Controller - Orange
PH01-G	Pipette Controller - Green

Powerful yet quiet pump  
Soft grip push buttons  
Double safety valve  
Autoclavable pipette cone



Comfortable stress-free operating knob



One hand operations



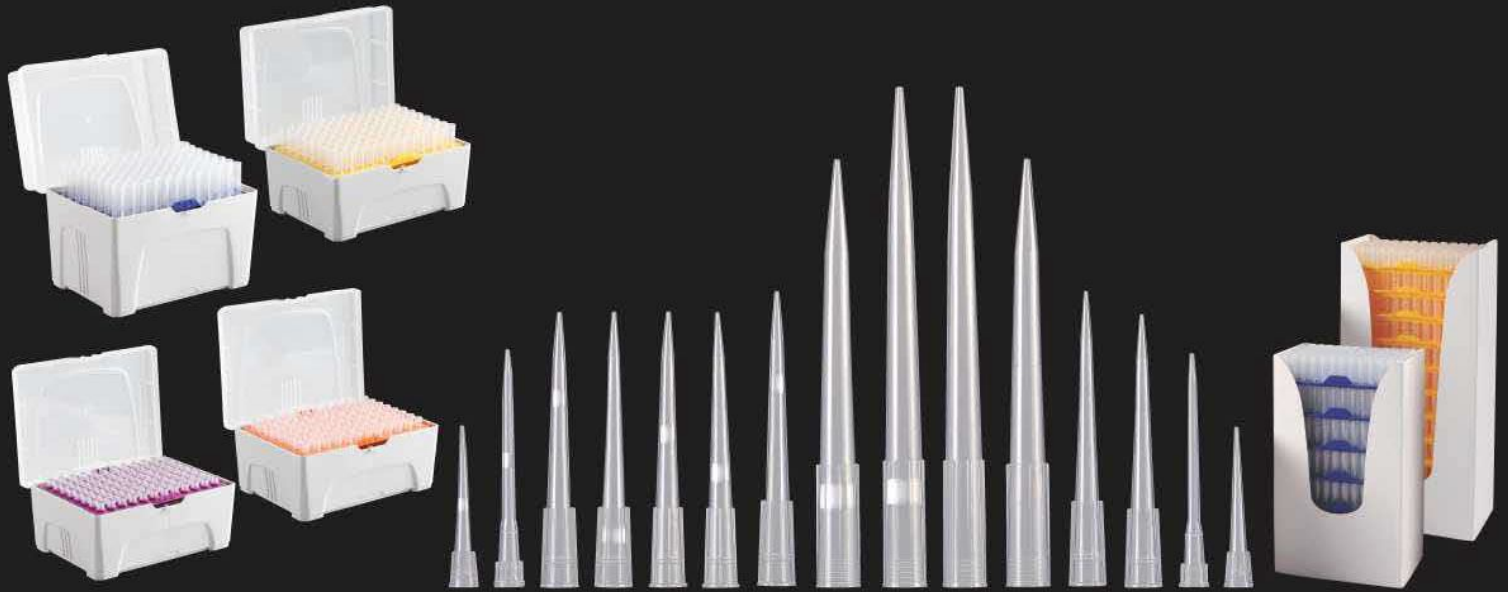
Desktop stand



Attractively colour coded



Wall mounting stand



- Produced from high quality diamond finish mould using special FDA approved medical grade virgin polypropylene with very high transparency
- Innovative design of tips for adaptability with wide range of pipettes with minimum force requirement for loading & ejection
- Ideal match for high sensitive PCR work
- Produced in a fully automatic, human touch free, clean room production facility. Free from RNase, DNase, Human DNA, Pyrogen & PCR inhibitor. Free of Lubricants and heavy metals
- Graduation marks on all the tips that act as visual checks to minimize any risk of errors during sample aspiration
- All these high quality tips are also available as sterile tips

~~RNase~~

~~DNase~~

~~HUMAN DNA~~

~~Endotoxin~~

~~HEAVY METALS~~

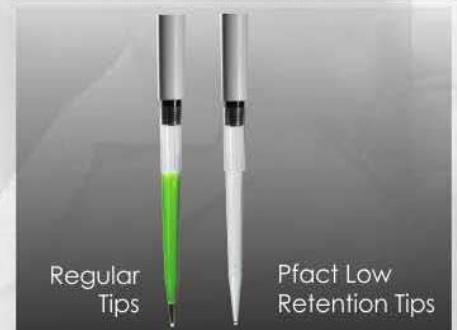
~~ATP~~

## Filter Tips

- Specially developed PE filters stops aerosols & contamination from entering into the pipette and thus lessens the risks or cross contamination
- "PUREST PURE" Filters. Free from chemical additives & heavy metals

## Low Retention

- Minimum retention = Maximum accuracy
- No Silicon additives = No leaching
- Manufactured from specially developed resins combined with high quality diamond finish mould creates **SUPERHYDROPHOBIC** internal surface



Regular  
Tips

Pfact Low  
Retention  
Tips

# P'fact

## Packing Options

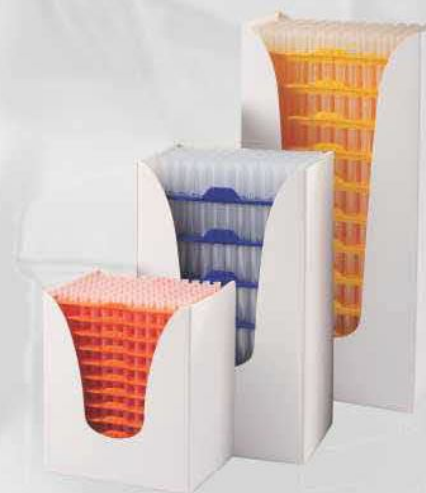
### Bulk

- Packed in Polyethylene self standing bag with easy tearing
- **Perforation & Zip lock**-Double sealing provides better protection against contamination and spillage while in use



### Rack

- Fully autoclavable and stackable
- Hinge rack allows single hand operation
- Color coded tray for easy identification



### Reloading Stack

- Reloading of rack with minimal effort
- Easy to operate without the need of any special equipment
- Tips prearranged in 96 (8x12) format
- Saves storage space and minimize packaging waste



P'fact Individual Wrap Tips	
Cat. No.	Description
PF-10-S-W	10µl Universal Grad, Sterile, Individual wrap tip
PF-10-S-L-W	10µl Universal Grad, Sterile, Low retention, Individual wrap tip
PF-200-S-W	200µl Universal Grad, Sterile, Individual wrap tip
PF-200-S-L-W	200µl Universal Grad, Sterile, Low retention, Individual wrap tip
PF-1000-S-W	1000µl Universal Grad, Sterile, Individual wrap tip
PF-1000-S-L-W	1000µl Universal Grad, Sterile, Low retention, Individual wrap tip

## Bulk

### 10 µl Universal Graduated Tips

1000 Tips / Bag (40 Bags / Case)

Cat #	Sterile	Low Retention	Filter
PF-10-B	-	-	-
PF-10-S-B	✓	-	-
PF-10-F-B	-	-	✓
PF-10-S-L-B	✓	✓	-
PF-10-S-F-B	✓	-	✓
PF-10-S-L-F-B	✓	✓	✓

### 10 µl Long Graduated Tips (Max Capacity 20µl)

1000 Tips / Bag (40 Bags / Case)

Cat #	Sterile	Low Retention	Filter
PF-10XL-B	-	-	-
PF-10XL-S-B	✓	-	-
PF-10XL-F-B	-	-	✓
PF-10XL-S-L-B	✓	✓	-
PF-10XL-S-F-B	✓	-	✓
PF-10XL-S-L-F-B	✓	✓	✓

### 10 µl Extra Narrow Graduated Tips (Max Capacity 20µl)

1000 Tips / Bag (40 Bags / Case)

Cat #	Sterile	Low Retention	Filter
PF-10XN-B	-	-	-
PF-10XN-S-B	✓	-	-
PF-10XN-F-B	-	-	✓
PF-10XN-S-L-B	✓	✓	-
PF-10XN-S-F-B	✓	-	✓
PF-10XN-S-L-F-B	✓	✓	✓

### 1000 µl Universal Graduated Tips

1000 Tips / Bag (10 Bags / Case)

Cat #	Sterile	Low Retention	Filter
PF-1000-B	-	-	-
PF-1000-S-B	✓	-	-
PF-1000-F-B	-	-	✓
PF-1000-S-L-B	✓	✓	-
PF-1000-S-F-B	✓	-	✓
PF-1000-S-L-F-B	✓	✓	✓

### 20 µl Universal Graduated Tips (With Filter only)

1000 Tips / Bag (20 Bags / Case)

Cat #	Sterile	Low Retention	Filter
PF-20-F-B	-	-	✓
PF-20-S-F-B	✓	-	✓
PF-20-S-L-F-B	✓	✓	✓

### 50 µl Universal Graduated Tips (With Filter only)

1000 Tips / Bag (20 Bags / Case)

Cat #	Sterile	Low Retention	Filter
PF-50-F-B	-	-	✓
PF-50-S-F-B	✓	-	✓
PF-50-S-L-F-B	✓	✓	✓

### 100 µl Universal Graduated Tips (With Filter only)

1000 Tips / Bag (20 Bags / Case)

Cat #	Sterile	Low Retention	Filter
PF-100-F-B	-	-	✓
PF-100-S-F-B	✓	-	✓
PF-100-S-L-F-B	✓	✓	✓

### 200 µl Universal Graduated Tips

1000 Tips / Bag (20 Bags / Case)

Cat #	Sterile	Low Retention	Filter
PF-200-B	-	-	-
PF-200-S-B	✓	-	-
PF-200-F-B	-	-	✓
PF-200-S-L-B	✓	✓	-
PF-200-S-F-B	✓	-	✓
PF-200-S-L-F-B	✓	✓	✓

### 1000 µl Extra Long Universal Graduated Tips (Max Capacity 1250 µl)

1000 Tips / Bag (10 Bags / Case)

Cat #	Sterile	Low Retention	Filter
PF-1000XL-B	-	-	-
PF-1000XL-S-B	✓	-	-
PF-1000XL-F-B	-	-	✓
PF-1000XL-S-L-B	✓	✓	-
PF-1000XL-S-F-B	✓	-	✓
PF-1000XL-S-L-F-B	✓	✓	✓

## Rack

### 10 µl Universal Graduated Tips

96 Tips x 10 Racks / Pack (10 Packs / Case)

Cat #	Sterile	Low Retention	Filter
PF-10-R	-	-	-
PF-10-S-R	✓	-	-
PF-10-F-R	-	-	✓
PF-10-S-L-R	✓	✓	-
PF-10-S-F-R	✓	-	✓
PF-10-S-L-F-R	✓	✓	✓

### 10 µl Long Graduated Tips (Max Capacity 20µl)

96 Tips x 10 Racks / Pack (10 Packs / Case)

Cat #	Sterile	Low Retention	Filter
PF-10XL-R	-	-	-
PF-10XL-S-R	✓	-	-
PF-10XL-F-R	-	-	✓
PF-10XL-S-L-R	✓	✓	-
PF-10XL-S-F-R	✓	-	✓
PF-10XL-S-L-F-R	✓	✓	✓

### 10 µl Extra Narrow Graduated Tips (Max Capacity 20µl)

96 Tips x 10 Racks / Pack (10 Packs / Case)

Cat #	Sterile	Low Retention	Filter
PF-10XN-R	-	-	-
PF-10XN-S-R	✓	-	-
PF-10XN-F-R	-	-	✓
PF-10XN-S-L-R	✓	✓	-
PF-10XN-S-F-R	✓	-	✓
PF-10XN-S-L-F-R	✓	✓	✓

### 1000 µl Universal Graduated Tips

96 Tips x 6 Racks / Pack (10 Packs / Case)

Cat #	Sterile	Low Retention	Filter
PF-1000-R	-	-	-
PF-1000-S-R	✓	-	-
PF-1000-F-R	-	-	✓
PF-1000-S-L-R	✓	✓	-
PF-1000-S-F-R	✓	-	✓
PF-1000-S-L-F-R	✓	✓	✓

### 20 µl Universal Graduated Tips (With Filter only)

96 Tips x 10 Racks / Pack (10 Packs / Case)

Cat #	Sterile	Low Retention	Filter
PF-20-F-R	-	-	✓
PF-20-S-F-R	✓	-	✓
PF-20-S-L-F-R	✓	✓	✓

### 50 µl Universal Graduated Tips (With Filter only)

96 Tips x 10 Racks / Pack (10 Packs / Case)

Cat #	Sterile	Low Retention	Filter
PF-50-F-R	-	-	✓
PF-50-S-F-R	✓	-	✓
PF-50-S-L-F-R	✓	✓	✓

### 100 µl Universal Graduated Tips (With Filter only)

96 Tips x 10 Racks / Pack (10 Packs / Case)

Cat #	Sterile	Low Retention	Filter
PF-100-F-R	-	-	✓
PF-100-S-F-R	✓	-	✓
PF-100-S-L-F-R	✓	✓	✓

### 200 µl Universal Graduated Tips

96 Tips x 10 Racks / Pack (10 Packs / Case)

Cat #	Sterile	Low Retention	Filter
PF-200-R	-	-	-
PF-200-S-R	✓	-	-
PF-200-F-R	-	-	✓
PF-200-S-L-R	✓	✓	-
PF-200-S-F-R	✓	-	✓
PF-200-S-L-F-R	✓	✓	✓

### 1000 µl Extra Long Universal Graduated Tips (Max Capacity 1250 µl)

96 Tips x 6 Racks / Pack (10 Packs / Case)

Cat #	Sterile	Low Retention	Filter
PF-1000XL-R	-	-	-
PF-1000XL-S-R	✓	-	-
PF-1000XL-F-R	-	-	✓
PF-1000XL-S-L-R	✓	✓	-
PF-1000XL-S-F-R	✓	-	✓
PF-1000XL-S-L-F-R	✓	✓	✓

## Reloading Stack

### 10 µl Universal Graduated Tips

96 Tips x 10 Plates / Pack (10 Packs / Case)

Cat #	Sterile	Low Retention
PF-10-K	-	-
PF-10-S-K	✓	-
PF-10-S-L-K	✓	✓

### 10 µl Long Graduated Tips (Max Capacity 20µl)

96 Tips x 10 Plates / Pack (10 Packs / Case)

Cat #	Sterile	Low Retention
PF-10XL-K	-	-
PF-10XL-S-K	✓	-
PF-10XL-S-L-K	✓	✓

### 10 µl Extra Narrow Graduated Tips (Max Capacity 20µl)

96 Tips x 10 Plates / Pack (10 Packs / Case)

Cat #	Sterile	Low Retention
PF-10XN-K	-	-
PF-10XN-S-K	✓	-
PF-10XN-S-L-K	✓	✓

### 200 µl Universal Graduated Tips

96 Tips x 10 Plates / Pack (10 Packs / Case)

Cat #	Sterile	Low Retention
PF-200-K	-	-
PF-200-S-K	✓	-
PF-200-S-L-K	✓	✓

### 1000 µl Universal Graduated Tips

96 Tips x 5 Plates / Pack (10 Packs / Case)

Cat #	Sterile	Low Retention
PF-1000-K	-	-
PF-1000-S-K	✓	-
PF-1000-S-L-K	✓	✓



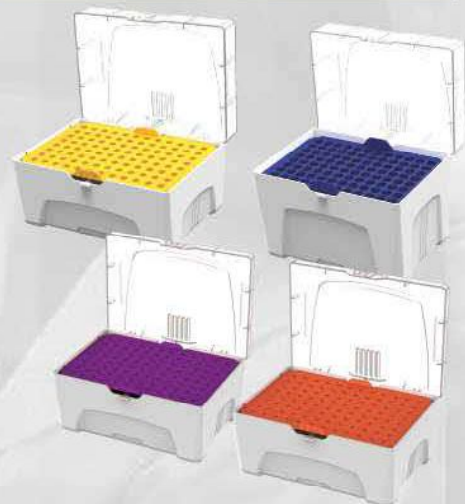
## Macro Tips



Cat.No.	Description
PF-5000A	5 ml tip suitable to P'fact A & VA-FA series pipette - 2 ml, 5 ml, 0.5-5 ml & 1-5 ml
PF-10000A	10 ml tip suitable to P'fact A & VA-FA series pipette - 10 ml & 1-10 ml pipette
PF-5000B	5 ml tip suitable to P'fact PRIME 2 ml, 5 ml & 0.5-5 ml pipette
PF-10000B	10 ml tip suitable to P'fact PRIME 10 ml & 1-10 ml pipette

## Empty Racks

Cat.No.	Description
PF-10-ER	Empty Rack suitable for P'fact 10 µl tips
PF-10XL-ER	Empty Rack suitable for P'fact 10XL µl tips
PF-10XN-ER	Empty Rack suitable for P'fact 10XN µl tips
PF-200-ER	Empty Rack suitable for P'fact 200 µl tips
PF-1000-ER	Empty Rack suitable for P'fact 1000 µl tips
PF-1000XL-ER	Empty Rack suitable for P'fact 1000 µl XL tips

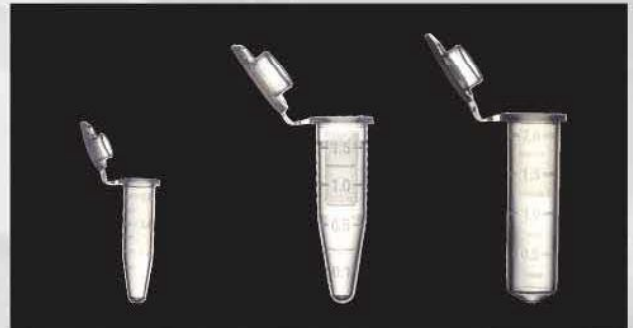




# P'fact CENTRIFUGE TUBES

## Pfact 0.5 ml, 1.7 ml & 2 ml Graduated Micro Centrifuge Tube

- Manufactured from FDA approved resin
- Certified RNase, DNase, DNA and Pyrogen free
- Free from heavy metals
- Can be centrifuged up to 20,000 RCF
- Withstands temperatures from -80 °C to + 121°C
- Easy seal design of the cap to ensure smooth opening and closing with single hand repeatedly
- Very clear transparent surface. Doesn't hinder spectrophotometer reading
- Tubes have thin cap membrane for trouble free needle piercing
- Flat & frosted lid as well as larger writing surface on body for easy marking and labeling



Cat. No.	Description
PCT - 005-B	0.5 ml Graduated Micro Centrifuge Tube
PCT - 005-S-B	0.5 ml Graduated Micro Centrifuge Tube, Sterile
PCT - 005-S-L-B	0.5 ml Graduated Micro Centrifuge Tube, Low Retention, Sterile
PCT - 017-B	1.7 ml Graduated Micro Centrifuge Tube
PCT - 017-S-B	1.7 ml Graduated Micro Centrifuge Tube, Sterile
PCT - 017-S-L-B	1.7 ml Graduated Micro Centrifuge Tube, Low Retention, Sterile
PCT - 02-B	2 ml Graduated Micro Centrifuge Tube
PCT - 02-S-B	2 ml Graduated Micro Centrifuge Tube, Sterile
PCT - 02-S-L-B	2 ml Graduated Micro Centrifuge Tube, Low Retention, Sterile

## Pfact 15 ml & 50 ml Graduated Centrifuge Tube

- Manufactured from FDA approved resin
- Free from RNase, DNase and Pyrogen
- Free from heavy metals
- Very clear transparent surface
- Can be centrifuged up to 18000 RCF & 20000 RCF in 15 ml & 50 ml tube respectively
- Leak proof screw cap
- Tamper proof & chemical resistance graduation printing
- Large writing area for sample identification

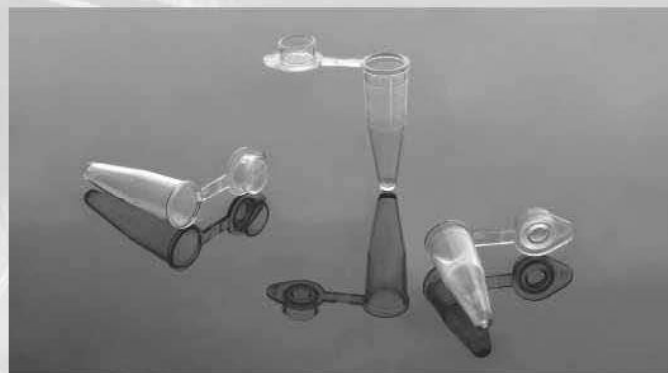


Cat.No.	Description
PCT-15-B	15 ml Centrifuge Tube with Cap
PCT-15-B-S	15 ml Centrifuge Tube with Cap, Sterile
PCT-15-R	15 ml Centrifuge Tube with Cap, Rack
PCT-15-S-R	15 ml Centrifuge Tube with Cap, Rack, Sterile
PCT-50-B	50 ml Centrifuge Tube with Cap
PCT-50-B-S	50 ml Centrifuge Tube with Cap, Sterile
PCT-50-R	50 ml Centrifuge Tube with Cap, Rack
PCT-50-S-R	50 ml Centrifuge Tube with Cap, Rack, Sterile
PCT-50-K-B	50 ml Self Standing Centrifuge Tube with Cap
PCT-50-K-B-S	50 ml Self Standing Centrifuge Tube with Cap, Sterile



## P'fact PCR CONSUMABLES

### Pfact PCR Tubes



Cat. No.	Description
PF-PC-001	0.2 ml Flat Cap Clear Tubes

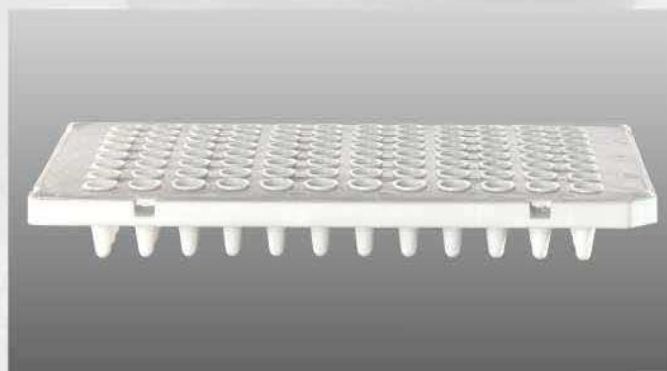
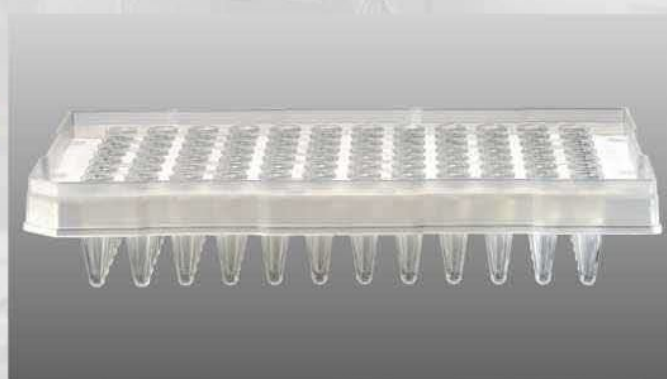
### Pfact PCR 8-Strip Tube with Caps



Cat. No.	Description
PF-PC-011	0.2 ml 8-strip tubes with attached flat cap
PF-PC-012	0.2 ml 8-strip tubes with separate flat cap
PF-PC-013	0.2 ml 8-strip tubes with separate domed cap

### Pfact PCR Plate

Cat. No.	Description
PF-PC-021	0.2 ml, No skirt, standard profile, 96 well PCR plate
PF-PC-022	0.2 ml, Sub-Semi skirted, standard profile, 96 well qPCR plate
PF-PC-023	0.1 ml, Sub-Semi skirted, low profile, 96 well qPCR plate
PF-PC-024	0.1 ml, Semi skirted, low profile, 96 well qPCR plate
PF-PC-025	0.1 ml, Semi skirted, low profile white, 96 well qPCR plate
PF-PC-031	PCR 96 well plate sealing membrane
PF-PC-032	qPCR 96 well plate optical sealing, pressure sensitive membrane
PF-PC-033	Aluminum membrane



# iFuge M08 / M08VT

The Smart Personal Centrifuge



This Micro Centrifuge is specially designed to suit your need for micro filtration and quick spin downs

- 8 place closed rotor ensures better airflow, better efficiency with quiet operation and low heat generation
- Electronic Brake for immediate stop on lid opening for user safety
- Saves time by doing quick runs by simply closing and opening the lid
- Next gen design with Digital Display
- Robust & Compact construction for long life
- Microprocessor controlled centrifuge with variable speed and time setting and also with last run memory function (M08VT)
- Imbalance Detection with auto cut off (M08VT)
- User enabled Digital Calibration function (M08VT)
- Whisper quiet operation
- Small footprint saves valuable bench space - suitable for use in hoods and cold rooms

Specifications	iFuge M08VT	iFuge M08
Rotor Capacity	8 x 1.5/2.0 ml Microtubes	
Maximum RPM/RCF (g)	6000 / 2000 g	
Display	Digital Display	
Imbalance Detection	Yes	No
Noise Level	< 55 db	
Variable Speed	Yes (1000-6000 RPM in steps of 100 RPM)	N.A.
Timer	1-25 Minutes & infinite mode	Infinite mode
Dimensions (WxDxH) in mm	162 x 157 x 115	
Rotors and Adaptors (included in standard pack)	8 x 1.5/2.0 ml Closed Rotor	
	2 zhPCR Strip Rotor (2 x 8 x 0.2 ml)	
	Reduction adaptors for 0.2/0.4 ml Microtubes	

\* Fixed speed version (M08) for specific speed can be made available.



**Electronic Safety Brake for user safety**



**Imbalance Detection with automatic cut off**



**Digital Display for Speed and Time**



**Microprocessor controlled**

# iFuge D12 / iFuge D18

High Speed Micro Centrifuge



- Brushless DC motor – Maintenance free, delivers better power/weight ratio and fit for extended runs
- Microprocessor controlled centrifuge with variable speed and time setting and also with last run memory function
- Compatible with Mini Hematocrit rotor & PCR Strip rotor
- One touch short spin operation & change over from RPM to RCF
- Intuitive simple interface for quick and convenient setting
- Better airflow design ensures lesser heat generation for greater sample safety and less noise
- Lid lock safety- Lid opens automatically on run completion
- Timer setting 1 to 99 minutes & infinite mode
- Small footprint saves valuable bench space
- Suitable for use in hoods or cold rooms

Specifications	iFuge D12	iFuge D18
<b>Rotor Capacity</b>	12 x 1.5/2.0 ml	18 x 1.5/2.0 ml
<b>Maximum RPM/RCF (g)</b>	15000 RPM / 15596 g	13500 RPM / 14792 g
<b>Imbalance Detection</b>	Imbalance Detection with auto cut off	
<b>Noise Level</b>	< 60 db	
<b>Motor Type</b>	(BLDC) Brushless DC motor	
<b>Time Setting</b>	1 to 99 Mins & infinite mode	
<b>Dimensions (WxDxH)</b>	260 x 244 x 205 mm	
<b>Rotors and Adaptors (included in standard pack)</b>	12 x 1.5/2 ml closed rotor with safety lid	18 x 1.5/2 ml closed rotor with metal safety lid
	Reduction adaptors for 0.2/0.5 ml Microtubes	
<b>Optional Rotors</b>	PCR Strip Rotor (2x8x0.2 ml with Metal safety lid) Hematocrit Rotor - 24 x 45 mm length capillary tubes	



Brushless DC Motor



Microprocessor controlled



Imbalance detection



Digital Display

# iFuge D06

Doctor Centrifuge



8 x 15 ml (Autoclaveable)



6 x 15 ml (Autoclaveable)

## The essential clinical centrifuge for hospitals, diagnostic & research labs for regular blood centrifuge applications

- Choice of 2 rotors : 8 x 15ml (Autoclavable SS holders) / 6 x 15ml (Autoclavable SS holders)
- Brushless DC motor for maintenance free long life
- Microprocessor controlled centrifuge with variable speed and time setting and also with last run memory function
- Precise RPM setting from 500-6500 RPM with least count of 100 RPM -can set by RCF
- Automatic imbalance detection for safe operation
- Timer setting 30 sec to 30 minutes & infinite mode
- One switch change over from RPM to RCF
- Lid lock safety feature during operation - Lid releases automatically after run completion
- Smart air flow design reduces noise
- Accommodates most common blood collection tubes - comes with adaptors for 5 ml, 7 ml & 9 ml tubes

Specifications	iFuge D06
Fixed Angle Rotor (Optional Rotors)	8 x 15 ml (Autoclaveable) - 3873 g
	6 x 15 ml (Autoclaveable) - 3684 g
Max RPM	6500
Motor Type	Brushless DC
Speed Setting	500 to 6500 rpm
Timer Setting	30 sec to 30 mins & infinite mode
Lid Lock Safety	Yes
Noise Level	< 60 dB
Imbalance Detection	Yes
Dimensions (W X D X H)	260 x 244 x 205 mm
Weight	4 kg
Adaptors (included in standard pack)	Chosen rotor with (adaptors for 5, 7 ml & 1.5/2 ml tubes takes most standard blood collection tubes)



Brushless DC Motor



Accommodates all common collection tubes



Imbalance detection



Microprocessor controlled

# iFuge M24PR

Refrigerated High Speed Micro Centrifuge



4 Rotor Options		
Rotor No.	Capacity	Max RPM/RCF (x g)
1	24 x 1.5/2 ml	21420
2	44 x 1.5/2 ml	22388
3	8 x 4 x 0.2/0.5 ml	15397
4	8 x 5 ml	18461

- Max capacity of 44 x 1.5 / 2 ml - delivers upto 15000 RPM
- Brushless DC motor for maintenance-free long life
- Microprocessor controlled centrifuge with variable speed and time setting and also with last run memory function
- Temperature setting from -10°C to +40°C
- Timer setting from 30 secs to 99 minutes and infinite mode
- Maintains constant temperature of 4°C even at max speed of 15,000 RPM
- Preset feature of quick cooling mode - Rotor chamber attains 4°C from ambient temperature in max 16 minutes
- User programmable (user can set upto 99 programs of 4 lines each)
- Single equipment for different work protocols with appropriate choice of rotors
- Large back-lit LCD display for easy setting & reading of multiple parameters
- Imbalance detection and lid lock safety feature

Specifications	iFuge M24PR
<b>Rotor Capacity</b>	24 x 1.5 / 2 ml microtubes*
	44 x 1.5 / 2 ml microtubes
	8 x 5 ml
	4 PCR strips
<b>Temperature range</b>	-10°C to 40°C
<b>Speed Setting</b>	500 - 15000 RPM
<b>Time Setting</b>	30 secs to 99 mins & infinite mode
<b>Display</b>	Large back lit LCD display
<b>Programmable Feature</b>	User can set and save up to 99 user defined programs of 4 lines each
<b>Lid Lock Safety</b>	Yes
<b>Imbalance Detection</b>	Yes
<b>Dimension (W x D x H)</b>	452 x 314 x 278 mm

\* Rotor supplied with the equipment. Optional rotors has to be ordered separately



Brushless DC Motor



Microprocessor Controlled



Maintains -10°C



Large Back Lit LED Display

# iFuge C4000

Clinical Centrifuge with Microprocessor & Brushless Motor



3 Rotor Options			
Rotor Type	Capacity	Max RPM/RCF (x g)	
Swing out	6x10ml	2270	
Fixed Angle	8x15ml	1950	
Fixed Angle	16x10ml	2180	

- Brushless DC motor for maintenance free long life
- Microprocessor controlled centrifuge with variable speed and time setting and also with last run memory function
- Single instruments for different work protocols with appropriate choice of rotors
- Precise RPM setting from 500 to 4000 RPM with least count of 10 RPM
- Imbalance detection with auto cut off
- Lid lock safety - Lid releases (automatically) after run completion
- Large LCD display for easy setting and reading multiple parameters
- Programming feature : User can save and run upto 99 defined programs (protocols)
- One touch short spin operation & change over from RPM to RCF
- Supplied with reduction adaptors for various sizes of blood collection tubes- 9 ml, 6 ml, 4 ml, 3 ml and 2 ml tubes

Specifications	iFuge C4000
<b>Rotors*</b>	6x10ml (Swing)/ 8x15ml (Fixed Angle)/ 16x10ml (Fixed Angle)
<b>Max RPM</b>	4000 RPM
<b>Motor Type</b>	Brushless DC
<b>Display</b>	Digital Display
<b>Speed Setting</b>	500-4000 RPM in steps of 10 RPM
<b>Timer Setting</b>	1-999 mins & Infinite mode
<b>Programmable Feature</b>	User can set and save upto 99 user defined programs (protocols)
<b>Lid Lock Safety</b>	Yes
<b>Imbalance Detection</b>	Yes
<b>Dimensions (WxDxH) in mm</b>	415 x 355 x 73 mm
<b>Weight of Equipment</b>	7.7kg (without Rotor)

\* Rotor to be specified before placing order



Microprocessor controlled



Brushless DC Motor



Digital Display



3 Rotor Options

# iFuge CS 03

Clinical Swing Out Centrifuge with Microprocessor & Brushless Motor



3 x 50 ml



- Brushless DC motor for maintenance free long life
- Swing out clinical centrifuge with capacity of 3 x 50 ml
- Microprocessor controlled centrifuge with variable speed and time setting and also with last run memory function
- Precise RPM setting from 500 to 3200 RPM with an accuracy of  $\pm 10$  RPM
- Automatic imbalance detection for safe operation
- Lid lock safety - Lid releases (automatically) after run completion
- Compact design with low loading height for ease of operation
- Programming feature: User can save and run upto 99 defined programs (protocols)
- One touch short spin operation & change over from RPM to RCF

Specifications	iFuge C4000
Capacity	3 x 50 ml (swing)
Max RPM/RCF (xg)	3200 RPM / 1470g
Motor Type	Brushless DC
Digital Display	Yes
Speed Setting	500-3200 RPM
Timer Setting	1-999 mins & Infinite mode
Programmable Feature	User can set and save upto 99 user defined programs (protocols)
Lid Lock Safety	Yes
Imbalance Detection	Yes
Dimensions (WxDxH) in mm	415 x 355 x 173 mm
Weight of Equipment	7.7kg (without Rotor)



Microprocessor controlled



Brushless DC Motor



Digital Display



Imbalance detection



# iFuge CS2P

Microplate Swing Out Centrifuge with Microprocessor & Brushless Motor



- Brushless DC motor for maintenance free long life
- Micro Plate swing out centrifuge with capacity of 2 skirted microplates - 96 & 384 wells
- Microprocessor controlled centrifuge with variable speed and time setting and also with last run memory function
- Precise RPM setting from 500 to 2200 RPM with an accuracy of  $\pm 10$  RPM
- Automatic imbalance detection for safe operation
- Lid lock safety - Lid releases (automatically) after run completion
- Compact design with low loading height for ease of operation
- Programming feature: User can save and run upto 99 defined programs (protocols)
- One touch short spin operation & change over from RPM to RCF

Specifications	iFuge C4000
Capacity	2 Skirted Micro Plates (96 & 384 wells)
Max RPM/RCF (xg)	2200 RPM / 560g
Motor Type	Brushless DC
Digital Display	Yes
Speed Setting	500-2200 RPM
Timer Setting	1-99 mins & Infinite mode
Programmable Feature	User can set and save upto 99 user defined programs (protocols)
Lid Lock Safety	Yes
Imbalance Detection	Yes
Dimensions (WxDxH) in mm	415 x 355 x 173 mm
Weight of Equipment	7.7kg (without Rotor)



Microprocessor controlled



Brushless DC Motor



Digital Display



Imbalance detection

# iFuge HCT

Hematocrit Centrifuge with Microprocessor & Brushless Motor



- Brushless DC motor for maintenance free long life
- Microprocessor controlled centrifuge with variable speed and time setting and also with last run memory function
- Precise RPM setting from 500 to 12000 RPM with least count of 100 RPM
- Lid lock safety : Lid releases automatically after run completion
- Timer setting upto 12 minutes
- RPM & RCF toggles alternatively on the display during operation
- Large LCD display for easy setting and reading multiple parameters
- PRESET feature : User can set favorite mode where Speed(RPM) and Time can be changed
- Small footprint saves valuable bench space

Specifications	iFuge HCT
Rotor Capacity	24 x 45/75 mm length capillary tubes
Max RPM / RCF	12000 RPM / 14119 g
Motor Type	Brushless DC
Display	Large back-lit LCD Display
Speed Setting	500-12000 RPM in steps of 100 RPM
Timer Setting	Upto 12 mins
Preset Feature	User can set parameters beforehand to facilitate use
Rotor	HCT rotor with Screw on Lid (for better contamination protection)
Weight of Equipment	5 kg (without Rotor)
Dimensions (WxDxH) in mm	363 x 301 x 105 mm



Microprocessor controlled



Brushless DC Motor



Digital Display



Imbalance detection

# iFuge L30P

Hematocrit Centrifuge with Microprocessor & Brushless Motor



## Multiple Rotor Options

Rotor Type: Fixed Angle					
Rotor No.	Capacity	Max RCF	Rotor No.	Capacity	Max RCF
L30-131	16 x 15ml	3144	L30-132	12 x 15ml	3144
L30-133	8 x 15ml	2644	L30-134	6 x 50ml	2644
L30-135	4 x 50ml	2644	L30-136	4 x 100ml	2559
L30-137	24 x 15ml	2852	*L30-138	30 x 15ml	2729
*L30-122	12 x 15ml	2445	*L30-123	6 x 50ml	2377

Rotor Type: Swing					
Rotor No.	Capacity	Max RCF	Rotor No.	Capacity	Max RCF
L30-125	16 x 15ml	3485	L30-126	12 x 15ml	3485
L30-127	8 x 15ml	3440	L30-128	6 x 50ml	3530
L30-129	4 x 50ml	3485	L30-130	4 x 100ml	3164
L30-124	2 Micro plates	2355	*L30-121	Base mount for bucket + Adaptor rotor	
*L30-121.a	4 x 3 x 15ml (bucket + Adaptor)		*L30-121.b	4 x 2 x 15ml (bucket + Adaptor)	
*L30-121.c	4 x 50ml (bucket + Adaptor)		*L30-121.d	4 x 2 x 50ml (bucket + Adaptor)	

\*Would be available from March 2017

The versatile benchtop centrifuge is suitable for various centrifuge applications in hospitals, institutes as well as in research and industrial laboratories.

- Max capacity 4 x 100 ml (swing out rotor) - delivers upto 4500 RPM
- Brushless DC motor for maintenance free long life
- Microprocessor controlled centrifuge with variable speed and time setting and also with last run memory function
- Single equipment for different work protocols with appropriate choice of rotors (Swing and Fixed angle)
- Imbalance detection and lid lock safety feature
- Large back-lit LCD display for easy setting & reading of multiple parameters (Speed & Time)
- Adjustable ramp & brake speeds from (upto 9 speed selection)
- User programmable (user can set upto 99 programs of 4 lines each)

Specifications	iFuge L30P
Motor Type	Brushless DC Motor
Display	Large back-lit LCD display
Speed Setting	500 to 4500 RPM
Timer Setting	1 to 999 mins & infinite mode
Remote Operation	Yes, operate and save log by connecting via USB
Imbalance Detection	Yes
Programmable	Yes
Dimensions (WxDxH) in mm	595 x 436 x 311 mm
Weight	40 kg (without rotor)
Rotors (not included)	Multiple rotor options (swing and fixed angle)



Brushless DC Motor



Microprocessor controlled



Imbalance detection



Large Back lit LCD Display

## iSwix Jr. / iSwix Jr. VT

### Mini Vortex Mixer

- Tiny Vortex with small footprint
- Delivers upto 4500 RPM for thorough mixing & quick vortexing
- Brushless DC motor for maintenance free long life
- Orbital diameter of 4.5 mm
- Smart and Robust design - press activation with suspension
- Robust construction with Die cast Aluminum base and rubber pads for stable and silent operation
- Inbuilt counterbalance for stable operation



BLDC Motor



Counter balance for stable operation

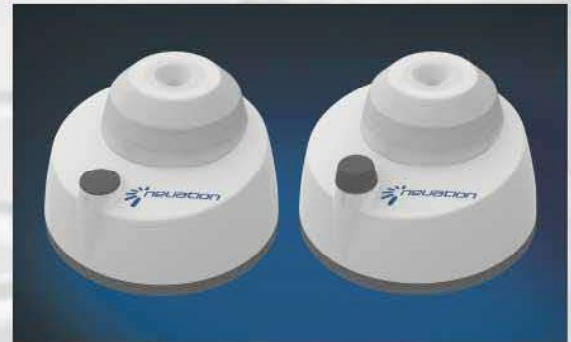


Suspension for smooth operation



Tiny footprint

World's "MOST POWERFUL" Vortexer!!!



Specifications	iFuge Jr.	iFuge Jr. VT
Max RPM	4500 rpm	
Orbital diameter	4.5 mm $\phi$	
Motor Type	Brushless DC	
Speed Setting	No	Yes
Max tube diameter	30 mm	
Max Load Capacity	100 gm	
Press activation	Yes	
Protection class	IP 40	
Dimensions (WxDxH) in mm	100 x 100 x 67 mm	
Weight	550 gm	

## iSwix / iSwix VT

### Vortex Mixer

- 3 way switch (On/Off/Touch)
- Brushless DC motor for maintenance free long life (iSwixVT)
- Orbital diameter of 4 mm
- Adjustable speed
- Inbuilt counter balance for study & safe operation
- Timer setting 0 to 999 minutes (iSwixVT)
- Digital display toggles between speed and time every 5 second (iSwixVT)
- Programmable pulse mode function (iSwixVT)
- Silent operation
- Robust construction for stable operation
- Universal Power Supply (iSwixVT)



BLDC Motor



Counter balance for stable operation



Optional attachments for different shaking applications



Specifications	iSwix	iSwix VT
Max RPM	2800 RPM	4200 RPM
Orbital diameter	4 mm $\phi$	
Motor Type	AC Motor	Brushless DC
Digital Display	No	Yes
Max Load Capacity	500 gm	
Speed Setting	Yes	
Timer Setting	No	Yes (min/sec)
Dimensions (WxDxH) in mm	205 x 136 x 138.5 mm	
Weight	3 kg	
Power Supply	220 VAC	24VDC
Attachments (optional)	Attachments for microplate, flasks, microtubes & round disc for different shaking applications	

The essential benchtop vortex for everyday mixing operations in the lab.

\*Every iSwix is supplied with conical cup attachment.

# iSwix MV

Digital Multi Tube Vortexer with Microprocessor & Brushless Motor



## Heavy duty Vortex Mixer with large capacity for high throughput laboratory

- Brushless DC motor for quiet operation and maintenance free long operation
- Microprocessor controlled vortex mixer with variable speed and time setting and also with last run memory function
- Adjustable speed ranging from 300-2500 RPM with increment of 1 RPM and accuracy of  $\pm 5$  RPM with option of electing Clockwise (CW) and Counterclockwise (CCW) motion
- Long timer setting from 1 to 999 mins & infinite mode
- Programmable Pulse with selection of variable time 30-99 seconds
- Power Overload feature in which if the equipment consumes more power than its capacity, it automatically shuts down
- Supplied with all four foam base attachments

Specifications	iSwix MV
<b>Attachments (optional)</b>	a) 7 ml tube foam to accommodate 60 tubes
	b) 15 ml tube foam to accommodate 45 tubes
	c) 50 ml tube foam to accommodate 18 tubes
	d) 250 ml flask foam to accommodate 6 flasks
<b>Digital Display</b>	Yes
<b>Variable Speed</b>	300-2500.RPM
<b>Motor Type</b>	BLDC
<b>Run Time</b>	1-999 mins & infinite
<b>Motion Type</b>	Clockwise (CW) and Counterclockwise (CCW) motion
<b>Pulse Mode</b>	Programmable Pulse with selection of variable time 30-99 seconds.
<b>Weight</b>	18 kg
<b>Input Voltage</b>	24 V
<b>Power Consumption</b>	75 W
<b>Protection class</b>	IP 21

\*iSwix MV contains VM-M1, VM-M2, VM-M3 & VM-M5



Brushless DC Motor



Microprocessor Controlled



Digital Display



Pulse Mode

## iRoll RnR4

### Four Tube Roller

- Gentle rocking and rolling motion for optimum mixing
- Fixed speed of 30 RPM with speed accuracy of +/-2 RPM
- Continuous / infinite mode of operation
- Tilt angle of +/- 3°
- Tool free removal / installation of rollers for replacement and cleaning
- Adjustable rollers spacing to hold different diameter tubes
- Suitable for mixing of blood sample and viscous substances
- Small footprint saving laboratory space
- Works with 80% humidity and 40°C
- Protection class of IP 21
- Robust construction for stable operation



Fixed Speed  
of 30 RPM

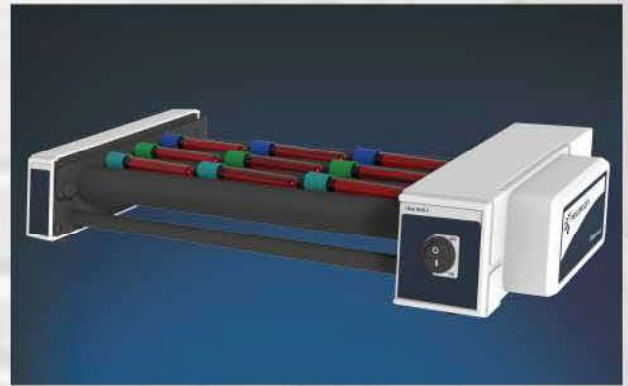


Detachable  
Rollers



Silent Operation

Four Tube Roller with smooth rocking and rolling action at fixed speed



Specifications	iRoll RnR4
Capacity	9 x 5 ml tubes
Motor Type	AC Synchronous
Variable Speed	Fix Speed of 30 RPM
Run Time	Continuous / Infinite
Tilt Angle	+/-3°
Speed Accuracy	+/-2 RPM
Noise Level	Noiseless operation
Load Capacity	1.5 kg
Roller Size (mm)	30 x 330
Protection class	IP 21
Dimensions (WxDxH) in mm	475 x 210 x 80 mm
Weight	2 kg

## iRoll DR16

### Blood Tube Rotator

- AC synchronous motor for noiseless operation
- Accommodate upto 4 ESR Tubes & 12 Blood collection tubes
- Circular rotating action gives gentle but effective mixing
- Fix speed of 30 RPM with an accuracy of +/-2 RPM
- Continuous / infinite mode of operation
- Fix disc plate angle of 38 degrees
- Robust construction with strong metal from design



Strong metal  
from design



Silent operation



Accuracy of  
+/- 2 RPM



Specifications	iRoll DR16
Capacity	16 Tubes (12 Blood Collection Tubes + 4 ESR Tubes)
Motor Type	AC Synchronous
Variable Speed	Fix Speed of 30 RPM
Run Time	Continuous / Infinite
Speed Accuracy	+/-2 RPM
Angle of Disc Plate	Fix angle of 38 degrees
Noise Level	Noiseless operation
Weight (Capacity)	1.5 kg
Dimensions (WxDxH) in mm	278 x 183 x 252 mm
Protection class	IP 21

# iRoll RnR6 / iRoll RnR10

Digital Tube Roller with Microprocessor & Brushless Motor



## Next generation Digital tube roller with Microprocessor for the optimum mixing of blood & viscous samples

- Brushless DC motor for quiet operation and maintenance free long life
- Detachable rollers for easy clean in case of sample spills
- Digital display & soft touch keys for easy reading & setting of parameters
- Microprocessor controlled tube roller with variable speed and time setting and also with last run memory function
- Speed ranging from 10 to 80 RPM & timer from 1 min to 99 min & continuous mode
- Unique user programmable feature - Save upto 9 programs Pulse mode feature
- Gentle *Rocking and Rolling* motion for proper mixing
- Stackable design with robust construction for stable operation

Specifications	iRoll RnR6	iRoll RnR10
Motor Type	Brushless DC motor	
Motion	Rocking & Rolling	
Number of tubes	15 x 7ml Blood Tubes	22 x 7ml Blood Tubes
Speed Range	10 to 80 RPM	
Timer Range	1 to 99 mins	
Operation Type	Continuous & Timed Operation	
Removable Rollers	Yes	
Pulse Mode	Yes	
Tilt Angle	+/-3°	
Protection Class	IP 21	
Weight	6 kg	7.5 kg
Permissible ambient Temp.	5°C to 40°C	
Dimensions (WxDxH) in mm	502 x 92.5 x 301	502 x 92.5 x 448
Power Consumption	6W	



Digital Display



Brushless DC Motor



Detachable Rollers



Pulse mode for thorough mixing

# iRoll DR24

Digital Disk Tube Rotator with Microprocessor & Brushless Motor



12 x 50 ml



24 x 15 ml



44 x 2 ml

- Brushless DC motor for quiet and maintenance free long life operation
- Microprocessor controlled disc rotator with variable speed and time setting and also with last run memory function
- 3 plate options : Supplied with any one chosen disc plate
- Adjustable speed ranging from 10-80 RPM with increment & accuracy of +/- 1 RPM
- Timer setting from 1 to 99 minutes & infinite mode
- Angle can be adjusted from 0 to 90 degrees
- Programmable - user can set and save upto 9 user defined programs (protocols)
- Pulse mode function for alternating clockwise and anticlockwise motion with 2 sec stops for better and thorough mixing
- Option for Auto power On in case of power failure - on resumption it will start automatically and run for the remaining time
- Easy removal / installation of Disc plates for replacement & cleaning
- Protection rating of Ip21

Specifications	iRoll DR24
Capacity (supplied with any one chosen disc plate)	12 tubes x 50 ml
	24 tubes x 15 ml
	44 tubes x 2 ml
Programmable Mode	Yes. User can set and save upto 9 user defined programs
Variable Speed	10-80 RPM
Motor Type	BLDC motor
Pulse Mode	Yes. Alternating clockwise and anticlockwise motion with 2 seconds stop for better and thorough mixing
Angle of Disc Plate	Adjustable from 0-90 degrees
Weight (Capacity)	2 kg
Digital Display	Yes
Input Voltage	24V
Dimensions (WxDxH) in mm	383 x 325 x 325 mm
Protection Class	IP 21



Microprocessor controlled



Brushless DC Motor



Digital Display

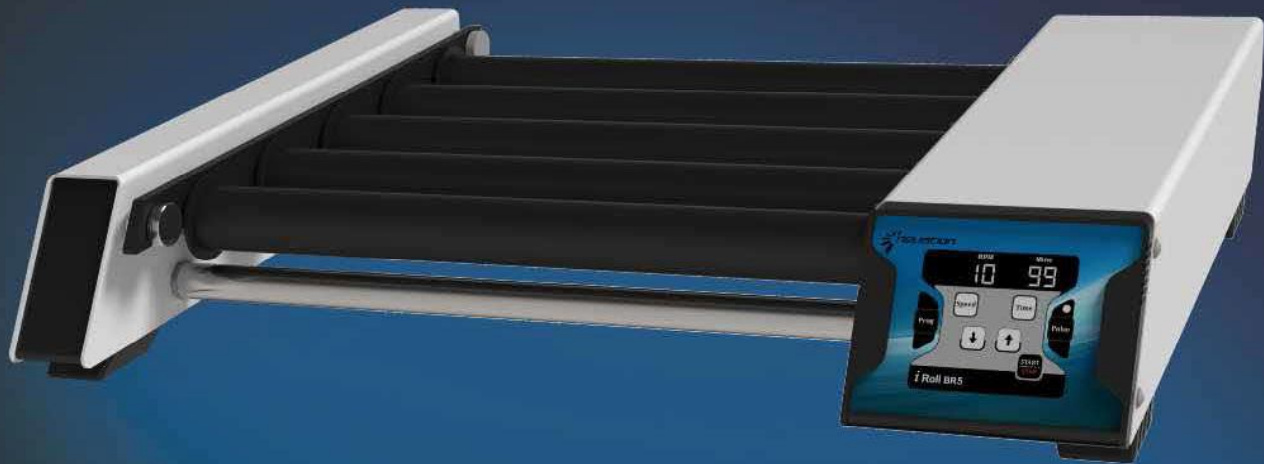


Pulse mode



# iRoll BR3 / iRoll BR5

Digital Bottle Roller with Microprocessor & Brushless Motor



- Digital roller for smooth and effective mixing
- Removable roller provide easy cleaning in case of sample spills
- Countdown timer
- Adjustable timer ranging from 1min to 99 min & infinite mode
- 3/5 tube bottle roller allows mixing of small and large bottle
- Robust construction for stable operation
- Brushless DC motor for quiet operation and maintenance free long life
- Closed loop operation for exact speed control under varied load conditions
- Works with 80% humidity and 40°C

Specifications	3 Bottle Roller	5 Bottle Roller
Motor Type	BLDC motor	
Motion	Rolling	
Max. Loading Capacity	5 Kg	
Number of rollers	3	5
Roller Size	30 x 330 mm	
Speed Range	1 to 15 RPM	3 to 45 RPM
Timer Range	1 to 99 mins and infinite	
Operation Type	Continuous & Timed Operation	
Bottle Size	75 to 121mm dia & Upto 290mm long	38 to 60mm dia & Upto 290mm long
Protection Class	IP 21	
Weight	5.5 Kg	6 Kg
Input Voltage	100 - 240 VAC, 50 / 60 Hz	
Output Voltage	24VDC	
Permissible ambient Temp.	5°C to 40°C	
Dimensions (WxDxH) in mm	500 x 365 x 93	



Microprocessor controlled



Brushless DC Motor



Detachable Rollers



Pulse mode for thorough mixing

## iRoll PR22

### Blood Tube Rotator

- AC synchronous motor for noiseless operation
- Can accommodate upto 22 Blood collection tubes
- Circular motion gives gentle but effective mixing
- Fix speed of 30 RPM with an accuracy of +/- 2 RPM
- Continuous / infinite mode of operation
- Robust construction with strong metal from design
- Maximum operational weight capacity of 1 kg
- Compact saves bench space design



Strong metal  
from design



Silent operation



Accuracy of  
+/- 2 RPM



Specifications	iRoll PR22
Capacity (supplied with any one chosen plate)	12 x 15 ml + 4 x 50 ml
	22 x 15 ml
Motor Type	AC Synchronous
Variable Speed	Fix Speed of 30 RPM
Run Time	Continuous / Infinite
Speed Accuracy	+/- 2 RPM
Removable Plate	Yes
Noise Level	Noiseless operation
Max Loading (Capacity)	1 kg
Dimension (W x D x H)	346 x 185 x 145 mm
Protection class	IP 21

## iRoll Junior

### Blood Tube Rotator

- AC synchronous motor for noiseless operation.
- Can accommodate upto 10 Blood collection tubes
- Circular motion gives gentle but effective mixing
- Fix speed of 30 RPM with an accuracy of  $\pm 2$  RPM
- Continuous / infinite mode of operation
- Robust construction with strong metal from design
- Maximum operational weight capacity of 1 kg
- Compact saves bench space design
- Protection class of IP 21
- Easy to remove and install attachments for replacement and cleaning



Silent operation



Accuracy of  
+/- 2 RPM



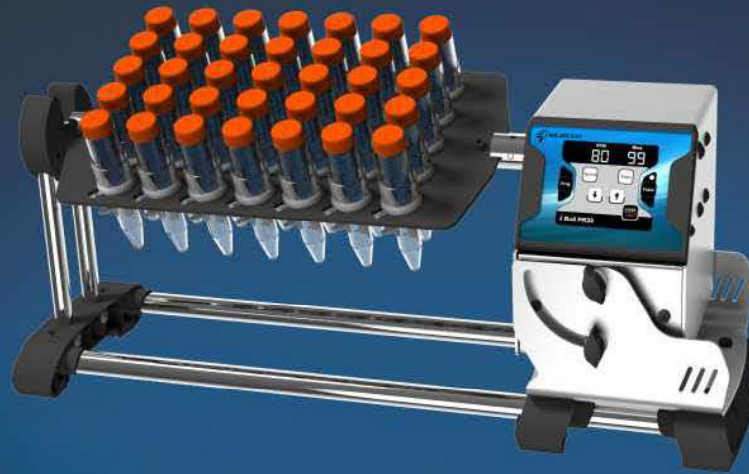
Small Footprint



Specifications	iRoll Junior
Capacity (supplied with any one chosen attachments)	10 x 6 ml
	9 x 15 ml
	4 x 50 ml
Motor Type	AC Synchronous
Variable Speed	Fix Speed of 30 RPM
Run Time	Continuous / Infinite
Speed Accuracy	+/- 2 RPM
Removable Plate	Yes
Noise Level	Noiseless operation
Max Loading (Capacity)	1 kg
Dimension (W x D x H)	190 x 135 x 133 mm
Protection class	IP 21

# iRoll PR35

Digital Plate Tube Rotator with Microprocessor & Brushless Motor



55 x 2 ml



35 x 15 ml



16 x 50 ml

- Brushless DC motor for quiet and maintenance free long life operation
- Microprocessor controlled plate rotator with variable speed and time setting and also with last run memory function
- 3 plate options : Supplied with any one chosen disc plate
- Adjustable speed ranging from 10-80 RPM with increment & accuracy of +/- 1 RPM
- Timer setting from 1 to 99 minutes & infinite mode
- Angle can be adjusted from 0 to 90 degrees
- Programmable - user can set and save upto 9 user defined programs (protocols)
- Pulse mode function for alternating clockwise and anticlockwise motion with 2 sec stops for better and thorough mixing
- Option for Auto power On in case of power failure - on resumption it will start automatically and run for the remaining time
- Easy removal / installation of Plates for replacement & cleaning

Specifications	iRoll PR35
Capacity (supplied with any one chosen disk plate)	16 tubes x 50 ml 35 tubes x 15 ml 55 tubes x 2 ml
Programmable Mode	Yes. User can set and save upto 9 user defined programs
Variable Speed	10-80 RPM
Run Time	1-99 mins & infinite
Motor Type	BLDC motor
Pulse Mode	Yes. Alternating clockwise and anticlockwise motion with 2 seconds stop for better and thorough mixing
Angle of Disc Plate	Adjustable from 0-90 degrees
Weight (Capacity)	2 kg
Digital Display	Yes
Input Voltage	24V
Dimensions (WxDxH) in mm	383 x 325 x 325 mm
Protection Class	IP 21



Microprocessor controlled



Brushless DC Motor



Digital Display



Pulse mode

# iStir Uno / iStir Quattro

Motorless Ultra Slim Magnetic Stirrer



The motorless magnetic stirrer is a truly maintenance free ultra flat stirring device for various laboratory applications

- No moving parts-truly maintenance free
- Low aspect ratio (just 12 mm thick)
- Software driven gradual acceleration
- Microprocessor controlled with last run memory feature
- Pulse mode - reverses the direction every 30 seconds for proper mixing
- Universal power supply- small wall mount adaptor
- IP 64 complaint design (Water spill resistant)
- Corrosion resistant SS top surface to fight harsh chemicals
- Synchronized speed setting (multiposition)

Specifications	iStir UNO	iStir Quattro
Max RPM	1500 RPM	1200 RPM
Speed Setting	from 15 RPM at every 50 RPM	
Time Setting	1 to 99 mins	
Digital Display	Yes	
Load capacity	800 ml	500 ml (each station)
Recommended bar length	25 mm	
Pulse function	Yes	
Sync Mode	NA	Yes
Last run memory	Yes	
Dimensions (WxDxH) in mm	120 x 164 x 12	520 x 120 x 12
Weight	400 gm	1.5 kg
Protection Class	IP 64 compliant design (Water spill resistant)	



Extremely sleek design



Pulse mode for thorough mixing



SS top for corrosion resistance



Microprocessor controlled

# iStir HP550 / iStir HP350

## Hot Plate Magnetic Stirrer



- Robust chemical resistance ceramic top made up of nano crystalline glass ceramic resistant to temperature shocks and liquid splash
- Elevated control panel for protection against leaking liquids
- Large display for easy setting for all values. All set values are readily visible without toggle. No shared display
- Slip detection mode to detect stir bar slip and automatically bring the stirring operations to most optimal limits
- 3 heating modes for rapid, gradual & accurate heating
- Pulse mode for vigorous mixing of liquids
- Constant speed even with change of load or viscosity
- Compatible with a PT-1000 temp. probe to accurately measure temperature of media. It is available as an optional accessories
- Powerful BLDC motor delivers constant speed under varying load condition
- Safe Temperature setting for safety & to avoid overheating
- Remote control panel operator
- RS - 232 interface

Specifications	iStir HP550	iStir HP350
Stirring Quantity in Ltr (max)	20	
Heating Temp Range (°C)	Ambient to 550°C	Ambient to 350°C
Speed Range (rpm)	200 - 2200	
Number Of Stirrer positions	1	
IP Rating	IP 21	
Setup plate Feature	Ceramic Plate	
RS 232 interface	Yes	
Temp Accuracy of setup plate	±1°C	
Temp Accuracy of PT-1000 Probe	±0.1°C	
Safety temp circuit	Yes	
Product weight (KG)	4.8 kg	
Slip detection	Yes	
RTD display	Yes	
External control panel	Optional	
Dimensions (WxDxH)	330 x 220 x 85 mm	
Set-up Plate Dimensions	180 x 180 mm	



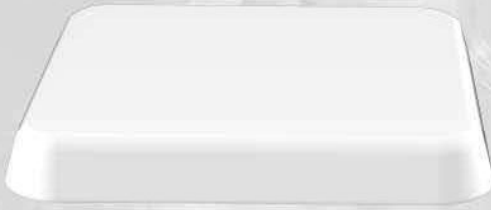
Microprocessor controlled



Pulse mode for thorough mixing

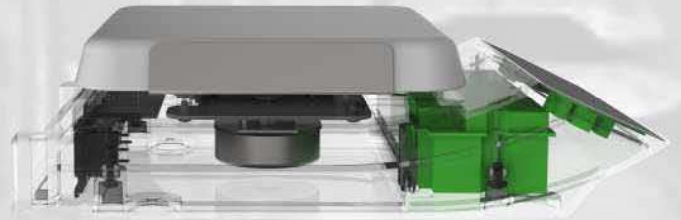


Digital Display



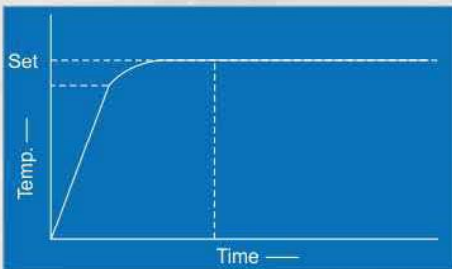
Ceramic top made up of nano crystalline glass ceramic resistant to temperature shocks, cracks and liquid splash

Ceramic top made up of nano crystalline glass ceramic resistant to temperature shocks, cracks and liquid splash

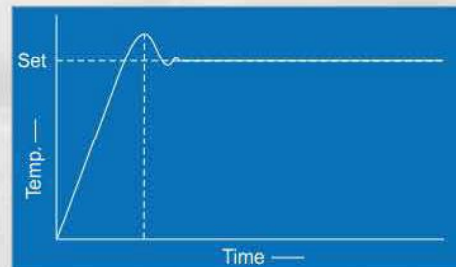


### 3 heating modes for rapid, gradual & accurate heating

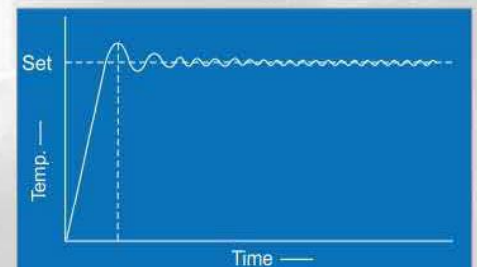
#### 1) H01 : Slow heating with High Accuracy



#### 2) H02 : Fast heating with High Accuracy



#### 3) H03 : Rapid Heating with Overshoot



# iStir HP5M / 10M / 15M

5 / 10 / 15 Station Heated Magnetic Stirrer with Microprocessor & Brushless Motor



## Multi Station Magnetic Stirrer for multiple samples simultaneous Stirring & Heating

- Powerful BLDC motor delivers constant speed
- Microprocessor controlled multi position stirrer with variable speed and time setting and also with last run memory function
- High performance multi position stirrer with 5/10/15 stirring positions with optimum use of laboratory space
- Variable speed ranging from 300-1500 RPM in steps of 10 RPM
- Timer setting from 1-999 mins and infinite
- Heater temperature setting from ambient to 120° C
- Homogenous temperature distribution across heating plate
- Programmable Pulse mode - reverses direction for better mixing
- Closed design allows easy cleaning and protects the equipments from accidental spills
- Water proof heater with inbuilt safety cutoff
- Non slip strength rubber feet

Specifications	iStir HP 5M	iStir HP 10M	iStir HP 15M
Motor Type	BLDC		
Number of Stirring Positions	5	10	15
Stirring Quantity Max	400 ml per position		
Variable Speed	300-1500 RPM in steps fo 10 RPM		
Heater Temperature Range	Ambient to 120° C		
Run Time	1-999 mins & infinite		
Pulse Mode	Programmable pulse mode - user can set time from 30 to 99 seconds		
Set-up Plate Material	Stainless steel plate with silicone sheet		
Set-up Plate Dimensions	456 x 118 mm	460 x 178 mm	460 x 264 mm
Weight	3 kg	5 kg	7 kg
Protection Class	IP 42		



Brushless DC Motor



Microprocessor controlled



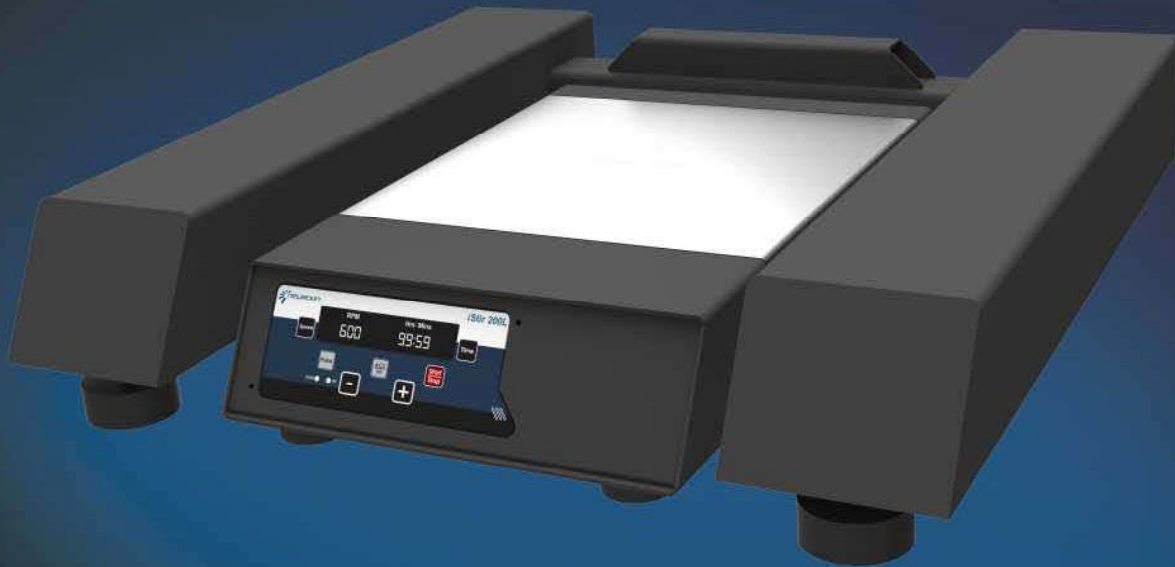
Programable Pulse Mode



Digital Display

# iStir 50L / iStir 200L

High Capacity Magnetic Stirrer with Microprocessor & Brushless Motor



- Brushless DC motor for quiet operation and maintenance free long operation
- Microprocessor controlled stirrer with variable speed and time setting and also with last run memory function
- Adjustable speed ranging from 100-1000 RPM (50L) & 100-600 RPM (200L) with increment of 1 RPM and accuracy of +/- 10 RPM
- Long timer setting from 1 to 99 hours and 59 minutes & infinite mode
- Choice of acceleration rates from A1 to A9
- Programmable Pulse with direction change feature - Pulse timing can be set from 30 to 300 seconds
- Stainless steel (SS) set up plate for corrosion protection
- Power Mode feature in case of power failure the equipment starts operating automatically for remaining left time on resumption
- Power Overload safety feature
- Optional feature of adjusting the height of the product
- Available with support frame for holding vessel

Specifications	iStir 50L	iStir 200L
<b>Motor Type</b>	Brushless motor	
<b>Max. Capacity</b>	50 Liters	200 Liters
<b>Variable Speed</b>	100 - 1000 RPM	100 - 600 RPM
<b>Run Time</b>	1-99:59 mins & infinite	
<b>Ramp Up Speed feature</b>	User can select different Acceleration rates (A1-A9 with A9 being the fastest rate and A1 slowest)	
<b>Pulse Mode</b>	Yes. Alternating clockwise and anticlockwise motion with 3 sec stop for better and thorough mixing	
<b>Digital Display</b>	Yes	
<b>Accuracy</b>	+/- 10 RPM	
<b>Plate Dimensions (SS)</b>	184X184 mm	250 x 250 mm
<b>Input Voltage</b>	240 V	
<b>Max. Stir bar length</b>	80 mm	120 mm
<b>Protection class</b>	IP 21	
<b>Structure frame size (With adjustable height)</b>	394 x 392 x 101 mm	505 x 500 x 105 mm



Brushless DC Motor



Microprocessor Controlled



Digital Display for Speed and Time



Pulse Mode



# iShak BL UNO VT

Personal Microplate Shaker

# iShak Quattro

4 Plate Shaker



The Microplate Shaker is an essential instrument for mixing in individual micro plates of different types

- 3 mm orbital motion for (iShak Quattro) & 2 mm (iShak Uno) thorough mixing in microplates
- Brushless DC motor for quiet operation and maintenance free long life
- Microprocessor controlled microplate shaker with variable speed and time setting and also with last run memory function
- Adjustable speed ranging from 200 to 1800 RPM
- Adjustable timer
- Microplates platform and rubber o-ring provides firm grip of plate holding
- Easy access to all 4 plates for loading and unloading (iShak Quattro)
- Digital display for ease of operation (iShak Quattro)
- Pulse mode for vigorous shaking (iShak Quattro)
- Independent start switch activates shaker for preset speed and time for repeatability in tests
- Low voltage instrument ensure user and product safety
- Accepts all standard microplates

Specifications	iShak BLUNOVT	iShak Quattro
Motor Type	BLDC motor	
Orbital Motion	2 mm	3 mm
Number of plates	1	4
Variable Speed	300 RPM to 1800 RPM	200 RPM to 1200 RPM
Run Time	1 to 99 mins & inf	1 to 999 mins & inf
Pulse mode	No	Yes
Maximum Volume	384 x 60 µl	4 x 384 x 60 µl
Inbuilt Counterbalance	Yes	Yes
Dimensions (LxWxH)	127 x 85 x 86 mm	88 x 343 x 195mm
Digital Display	Yes	Yes
Power Consumption	15 W	36 W
Attachments	Replaceable Clamps	Acc. All standard



Microprocessor Controlled



Brushless DC Motor



Digital Display



Counter balance for stable operation

# Thermo Shaker

## 4 Plate Incubated Shaker



- 3 mm orbital motion for thorough mixing in microplates
- Brushless DC motor for quiet operation and maintenance free long life
- Temperature setting range from Ambient to 70°C
- Adjustable speed ranging from 200 to 1200 RPM
- Microprocessor controlled digital display
- Long timer setting up to 99 hours & 59 minutes
- Critical parameters like Speed, Time & Set & Actual temperature are digitally displayed
- Rubber O-ring provides firm grip for plate holding
- Programmable pulse mode for vigorous shaking in clockwise and counter-clockwise direction
- Compatible with all skirted microplates
- Easy to clean & maintain the equipment

Specifications	Thermo Shaker
Motor Type	BLDC Motor
Orbital Motion	3 mm
Numbers of plates	Upto 4
Heat Temperature Range	Ambient to 70°C
Variable Speed	200 RPM to 1200 RPM
Run Time	1 to 999 mins & inf
Pulse Mode	Yes, Programmable ( 30 sec to 99 sec)
Display	7 Segment LED
Maximum Volume	4 x 384 x 60 µl
Inbuilt Counterbalance	Yes
Dimensions (W x D x H)	365 x 196 x 150 mm



**Microprocessor  
Controlled**



**Brushless  
DC Motor**



**Digital  
Display**



**Pulse mode for  
thorough mixing**

# iShak 3D-3 & iShak 3D-5

Digital 3D Shaker with Microprocessor & Brushless Motor



- Brushless DC motor for quiet and maintenance free long operation
- Three dimensional rocking / tumbling motion for homogenous mixing
- Microprocessor controlled 3D shaker with variable speed and time setting and also with last run memory function
- Variable speed setting from 10 to 80 RPM for 3 kg shaker and 15-120 RPM for 5 kg shaker in steps of 5 RPM
- Long timer range from 1-999 mins & infinite mode
- Programmable feature in which user can set and save upto 9 user defined programs (protocols)
- Unique 'Run-Pause-Run' pulse mode - user can set time from 30 to 99 seconds
- Includes spiked rubber mat & an optional accessory of sticky pad mat
- Easy to clean and protects the equipments against penetration of liquids. (IP 21 protection )
- Non slip rubber feet for stable operation

Specifications	iShak 3D-3	iShak 3D-5
Weight (Capacity)	3 kg	5 kg
Variable Speed	10-80 RPM	15-120 RPM
Motor Type	BLDC	
Movement	Tumbling 7°	
Run Time	1-999 mins & infinite	
Programmable Mode	Yes. User can set and save upto 9 user defined programs (protocols)	
Pulse Mode	Unique Run-Pause-Run pulse mode - User can set time from 30 to 99secs	
Digital Display	7 Segment LED	
Attachments	Spiked Rubber Mat (Included) Sticky Pad Mat (optional)	
Plate size	307mm x 267 mm	350 x 350 mm
Protection class	IP 21	



Microprocessor Controlled



Brushless DC Motor



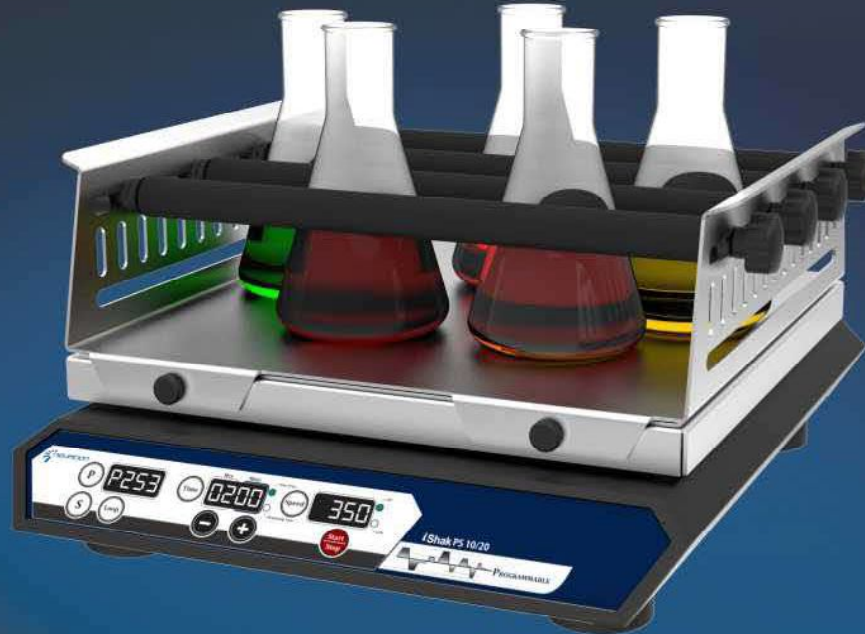
Digital Display



Momentary pause in Pulse mode

# iShak PS 10/20

10mm / 20mm, Multipurpose Platform Shaker



- Platform shaker with true Orbital and Linear reciprocating motion, for shaking mass upto 15kgs.
- Brushless DC motor for long life and maintenance free operation
- Dedicated LED display for Speed, Time & Program parameters
- Time ranging from 1 min to 99 hours
- Program mode allows to set motion direction, speed, time, dwell time, sequence and loop operation
- User can save upto 6 programs with each program having 9 sub - programs
- Different attachments platform makes it possible to use almost all shapes and sizes of vessels
- Option for auto power On (in case of power failure) - runs for remaining time after resumption
- RS-232 interface for remote operation optional
- Protection rating of Ip21

\*While ordering please specify the motion type & displacement ( linear/ orbital -10/20 mm) & the attachment you wish to order with the shaker

Specifications	iShak PS 10	iShak PS 20
Shaking movement	Orbital / Linear	
Orbital diameter	10 mm	20 mm
Max Weight	Upto 7.5 kg	Upto 7.5 kg
Speed	50 RPM To 500 RPM	50 RPM To 300 RPM
Motor Type	Brushless DC motor	
Time Setting Range	Upto 99.59 hrs	
IP	IP 21	
Programable feature	6 programs with each program having 9 sub-programs	
Platform Size (LxW)	330 x 300 mm	
Program Looping	Yes	
RS 232 interface	(Optional)	
Dimensions (WxDxH) in mm	350 x 408 x 99 mm	

### Universal attachment



Flask Capacity  
250ml x 9 / 500 ml x 6

### Plastic clamp attachment



Flask Capacity  
250ml x 9 / 500 ml x 9

### SS clamp attachment



Flask Capacity  
250ml x 9 / 500 ml x 9

# iShak US15

30 mm - 70 mm Diameter, Orbital / Linear motion



Attachments	Platform Shaker Attachments
UA-01	Universal platform with adjustable bars (Flasks capacity: 36 x 250ml, 25 x 500 ml, 13 x 1000 ml)
PC-250	Base plate with 24 plastic clamps : 24 x 250 ml
PC-500	Base plate with 24 plastic clamps : 24 x 500 ml
SS-250	Base plate with 24 Stainless steel clamps : 24 x 250 ml
SS-500	Base plate with 24 Stainless steel clamps : 24 x 500 ml
SC-100	Base plate with 24 Stainless steel clamps : 24 x 100 ml
SC-1000	Base plate with 24 Stainless steel clamps : 8 x 1000 ml

- Platform shaker with true Orbital and Linear reciprocating motion, for shaking mass upto 15 Kg.
- Brushless DC motor for long life and maintenance free operation
- Dedicated LED display for Speed, Time & Program parameters
- Time ranging from 1 min to 99 hours & 59 minutes
- Program mode allows to set motion direction, speed, time, dwell time, sequence and loop operation
- User can save upto 6 programs with each program having 9 sub - programs
- Different attachments platform makes it possible to use almost all shapes and sizes of vessels
- RS-232 interface for remote operation optional
- Protection rating of IP 21

\*While ordering please specify the motion type & displacement ( linear or orbital / 30 -70 mm ) & the attachment you wish to order with the shaker

Specifications	iShak US 15
Shaking movement	Orbital / Linear
Orbital diameter*	30, 40, 50, 60, 70 mm
Max Weight	Upto 15 kg
Speed	50 To 300 RPM
Motor Type	Brushless DC motor
Time Setting Range	1 min to 99.59 hrs
Platform Size (LxW)	745 mm x 490 mm
IP	IP 21
Programmable feature	6 Programs with each program having 9 sub - Programs
Program Looping	Yes
RS 232 interface	(Optional)
Dimensions (L x W x H)	825 mm x 625 mm x 165 mm



Brushless DC Motor



Microprocessor Controlled



User Programmable



Pulse Mode



## ***i Rupt 24P***

### **Homogenizer**

Capacity : 24 x 2ml / 12 x 7ml

Max Speed : 500 to 4500 RPM



## ***i Fuge L30PR***

### **Refrigerated Lab Centrifuge**

Capacity : 4 x 100 ml

Temperature : -10°C to 40°C

Max Speed : 500 to 4500 RPM



***i* Stir Uno+**

**Slim Motorized Magnetic Stirrer**

Capacity : 10 Ltr

Max Speed : 200 to 2200 RPM



***i* Stir Quattro+**

**Slim Motorized Magnetic Stirrer**

Capacity : 1 Ltr / Station

Max Speed : 200 to 1500 RPM



***i* Stir Penta+**

**Slim Motorized Magnetic Stirrer**

Capacity : 2 Ltr / Station

Max Speed : 200 to 2200 RPM

**i Shak IS 7.5**  
Incubated Platform Shaker  
Capacity : Upto 7.5kg  
Orbital Diameter : 20 mm  
Max Speed : 50 to 300 RPM



**i Stir 0-10**  
Overhead Stirrer

**Dry Bath Incubator**

